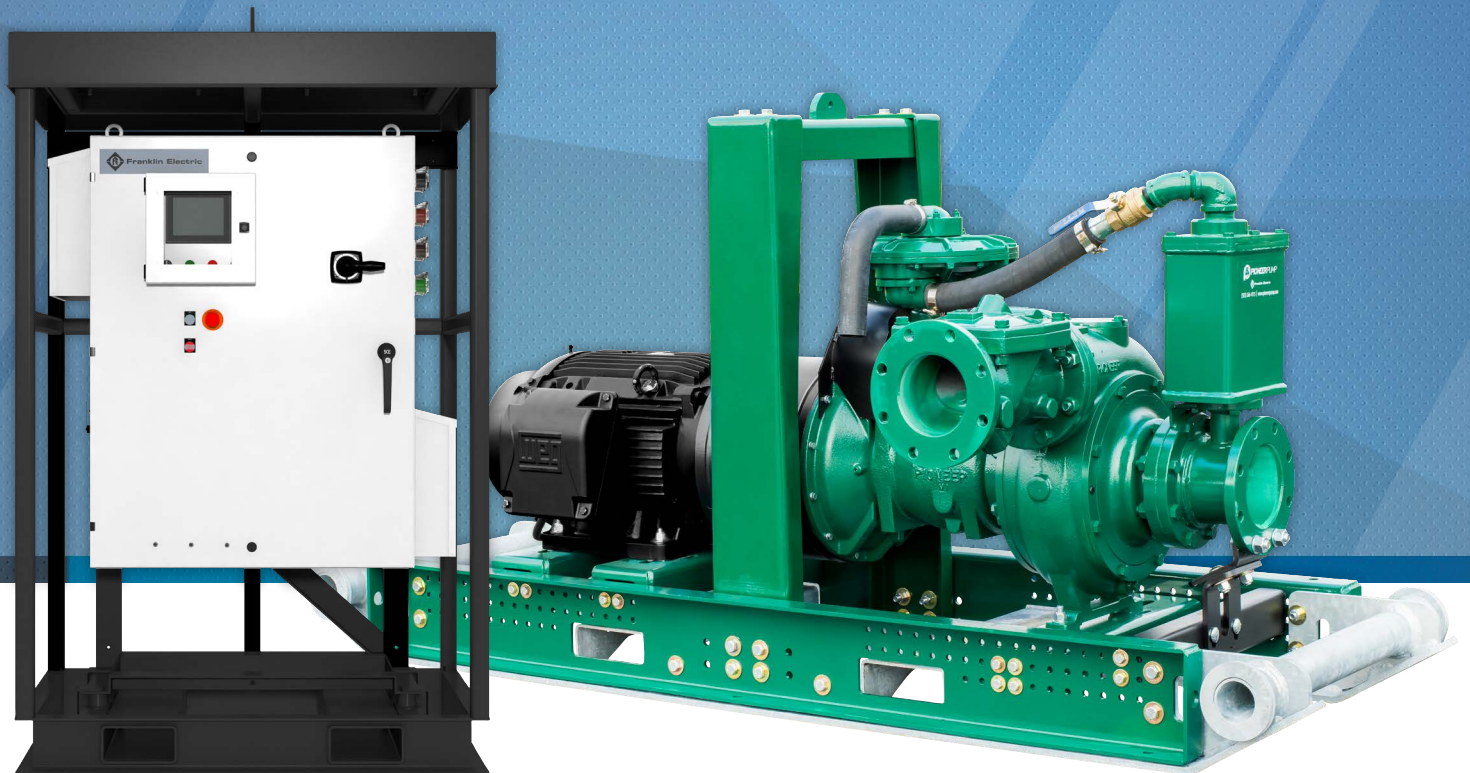




ElectricPAK™

ELECTRIC-DRIVEN PUMP PACKAGES



ELECTRICPAK ELECTRIC-DRIVEN PUMP PACKAGES

Overview	1
Small Platform	4
Medium Platform.....	6
Large Platform	8
Performance.....	10
Integrated ElectricPAK.....	14
ElectricPAK VFD	15
SmartPrime™ Control Interface.....	16
FE Select.....	17
Engineered Packages	19

For the most up-to-date product information, visit pioneerpump.com.



YOUR PARTNER FOR **WATER SYSTEMS**



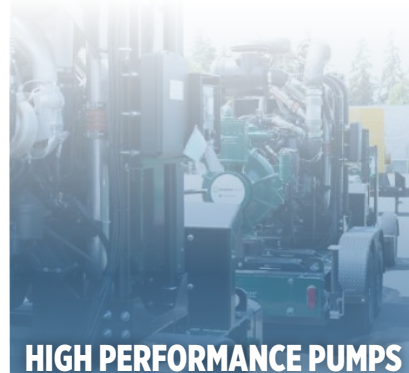
ABOUT FRANKLIN ELECTRIC

Franklin Electric is a global provider of complete systems for the movement of water.



ABOUT PIONEER PUMP

Pioneer Pump, a brand of Franklin Electric, specializes in the engineering and manufacturing of large centrifugal pumps and packages.



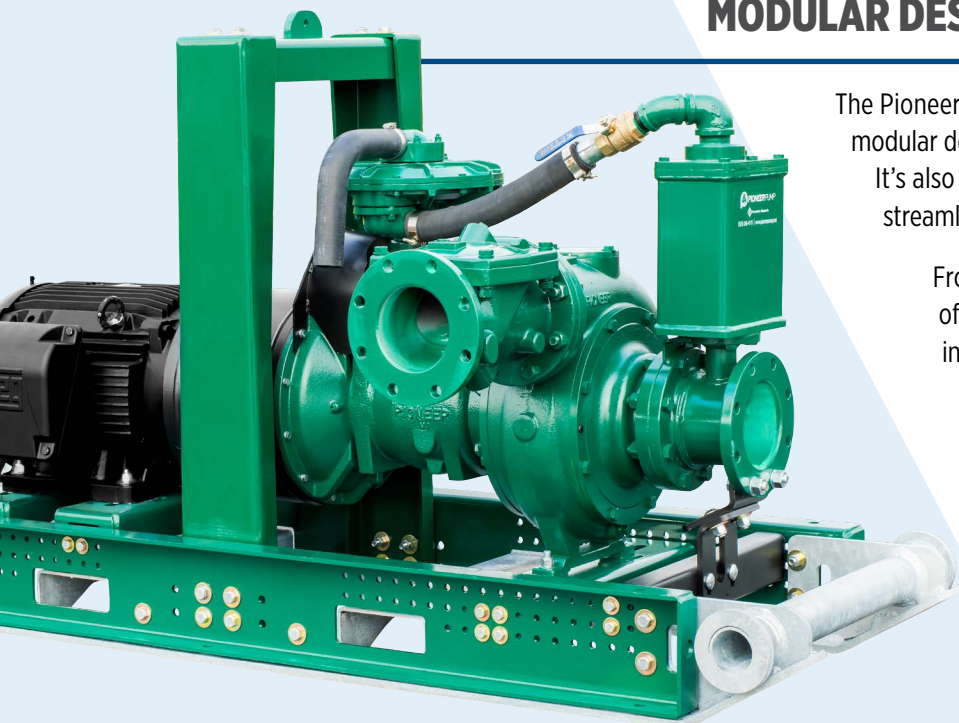
HIGH PERFORMANCE PUMPS

Transport water and wastewater for any sized job with our proven portfolio of centrifugal pumps.

MODULAR DESIGN. QUICK TURNAROUND.

The Pioneer Pump® ElectricPAK™ delivers more than just a modular design that can arrive on site and startup quickly. It's also engineered from the ground up to offer a fully streamlined experience for both owners and operators.

From initial selection, to installation, to a lifetime of operation: durability and performance are built into every component. Each configured assembly includes high-performance pumps and electric motors that provide better flow, higher head and greater efficiency.



ElectricPAK



OVERVIEW

AVAILABLE PUMP ENDS FOR YOUR ELECTRICPAK

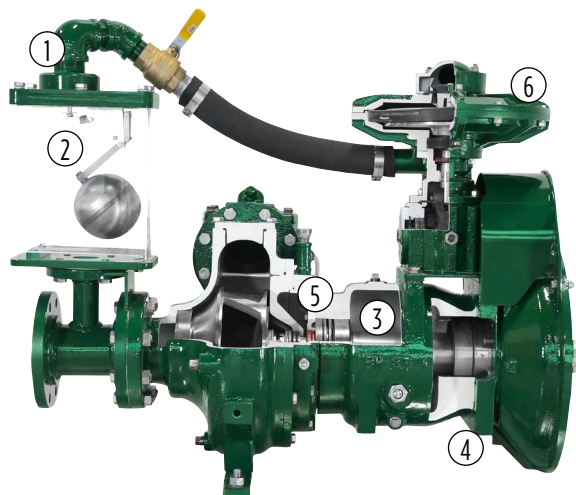
Pump End Configuration	FLOODED SUCTION (NO PRIMING)			VACUUM-ASSISTED DRY PRIMING		
	CLEAR LIQUIDS	SOLIDS HANDLING	VORTEX (EXTREME SOLIDS HANDLING)	CLEAR LIQUIDS	SOLIDS HANDLING	VORTEX (EXTREME SOLIDS HANDLING)
PUMP SIZE	3-12" (80-300 mm)	4-12" (100-760 mm)	4-8" (100-200 mm)	3-12" (80-300 mm)	4-12" (100-300 mm)	4-6" (100-150 mm)
FLOW RANGE	100-10,200 gpm (4-10,000 m ³ /h)		1,450-3,600 gpm (329-818 m ³ /h)	100-10,200 gpm (4-10,000 m ³ /h)		1,450-2,300 gpm (329-522 m ³ /h)
MAX HEAD	530+ feet (160+ meters)	420+ feet (130+ meters)	150+ feet (46+ meters)	530+ feet (160+ meters)	420+ feet (130+ meters)	130+ feet (40+ meters)
SOLIDS SIZE	0.5-2.3" (10-60 mm)	2-3.75" (50-95 mm)	3.15-5.12" (80-130 mm)	0.5-2.3" (10-60 mm)	2-3.75" (50-95 mm)	3.15-4.92" (80-125 mm)
WET END MATERIAL	Ductile Iron		Ductile Iron	Ductile Iron		Ductile Iron
IMPELLER MATERIAL	CA6NM Stainless Steel		Ductile Iron	CA6NM Stainless Steel		Ductile Iron

THE PIONEER PRIME ADVANTAGE

A true dry-prime pump, our self-priming system eliminates the need to prime the pump and is engineered to prevent product carryover. The Pioneer Prime hydraulic design maximizes lift capability and offers both quick initial priming and continuous, unattended reprime under auto stop/start conditions.

FEATURES:

- 1. Stainless Steel Air Separation Valve**
Allows for rapid priming with no product carryover
- 2. Priming Chamber**
Stainless steel internal parts for longer life
- 3. Reliable Sealing Components**
Hybrid cassette seals simultaneously prevent leakage and eliminate shaft wear
- 4. Heavy-Duty Modular Bearing Housing**
Designed to run at high speeds without risk of shaft or bearing failure
- 5. Run-Dry System**
Oil-lubricated mechanical seal allows the pump to run completely dry without damage
- 6. Vacuum Pump**
Belt driven from pump shaft



PIONEER PRIME SYSTEM & OTHER SPECIFICATIONS

Priming System	Mechanically driven diaphragm-style vacuum pump
Air Removal Capability	50 CFM
Priming Chamber	Single chamber w/positive sealing air separation PosiValve™ with stainless steel float ball and linkage
Discharge Check Valve	Swing style: ductile iron w/nitrile disc

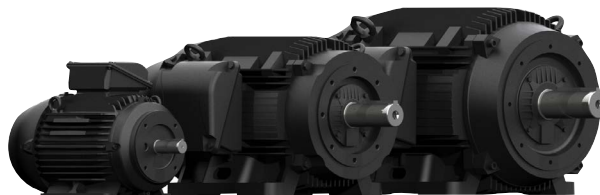
Mechanical Seal	Single seal w/tungsten carbide vs. silicon carbide seal faces, FKM elastomers, 300 series stainless steel hardware and spring, designed for indefinite dry running
Pump End Bearing	Single row ball
Drive End Bearing	Double row angular contact
Shaft	17-4 PH stainless steel
SAE	Engine-mount bracket options available

OVERVIEW

POWERING YOUR ELECTRICPAK

Every ElectricPAK is engineered with heavy duty motors that are ideally suited for industrial applications:

- Totally Enclosed Fan Cooled (TEFC), Premium Efficiency (PE), severe duty rated (meets Class 1 Div 2)
- Inverter duty with insulated bearing for use with Variable Frequency Drive (VFD)
- Listed are 3-Phase, 60 Hz with voltage and frame size noted



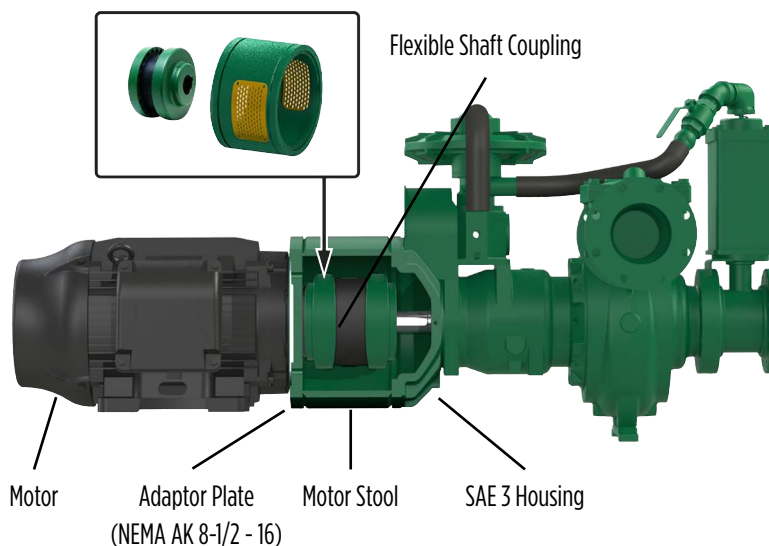
MOTOR SPECIFICATIONS

HP	Voltage	Frame Size		
		2-Pole (3600 RPM)	4-Pole (1800 RPM)	6-Pole (1200 RPM)
7.5	260/460	213T	213T	254T
10	260/460	215T	215T	256T
15	260/460	254T	254T	284T
20	260/460	256T	256T	286T
25	260/460	284T	284T	324T
30	260/460	286T	286T	326T
40	260/460	324T	324T	364T
50	260/460	326T	326T	365T
60	260/460	364T	364T	404T
75	260/460	365T	365T	405T
100	260/460	405T	405T	444T
125	260/460	444T	444T	447T
150	460	445T	445T	447T
200	460	447T	447T	447T
250	460	449T	449T	449T
300	460	449T	449T	L449T
350	460	449T	449T	N/A

NOTE: All motors are TEFC, premium efficiency, severe duty rated and inverter duty with insulated bearing for use with VFD; All motors listed are 3-Phase, 60 Hz with voltage and frame size noted

MOTOR STOOL DESIGN

The ElectricPAK uses a new bracket design that rigidly connects the pump and motor together. The bracket, also known as a motor stool, is engineered to precise tolerances to ensure that the coupling remains aligned and protected. ElectricPAK units can be moved and transported freely without the need to perform a realignment and are designed specifically with heavy-duty, suction lift applications in mind.



OVERVIEW

MOTOR STOOL SPECIFICATIONS

HP	Platform Size	Pump SAE Size	Motor Stool
7.5	Small	SAE 5	NEMA A
10	Small	SAE 5	NEMA A
15	Small	SAE 5	NEMA A
20	Small	SAE 5	NEMA A
25	Small	SAE 5	NEMA A
30	Small	SAE 5	NEMA A
40	Small	SAE 5	NEMA A
50	Medium	SAE 3	NEMA B
60	Medium	SAE 3	NEMA B
75	Medium	SAE 3	NEMA B
100	Medium	SAE 3	NEMA B
125	Large	SAE 3	NEMA B
150	Large	SAE 3	NEMA B
200	Large	SAE 3	NEMA B
250	Large	SAE 3	NEMA B
300	Large	SAE 3	NEMA B
350	Large	SAE 3	NEMA B

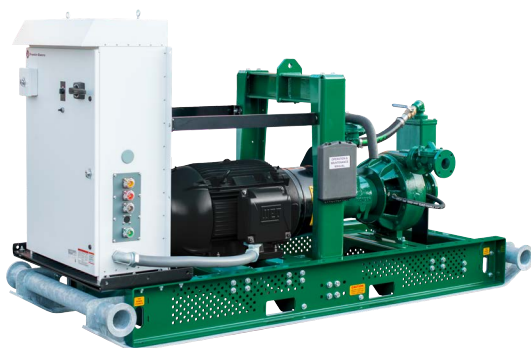
VARIABLE FREQUENCY DRIVE OPTIONS

A variable frequency drive (VFD) on the job site needs to be as tough as the environment it's in. That's why we've taken the best features of our most popular VFD system and re-packaged it to withstand the demands of transport and deliver a more intuitive startup experience with our SmartPrime touchscreen interface. You get the operating performance you need, packaged the way that works best for you: full ElectricPAK system or standalone skid.

ELECTRICPAK VFD



INTEGRATED ELECTRICPAK



SMARTPRIME CONTROL INTERFACE



The SmartPrime interface handles all aspects of operations with easy-to-navigate graphics, eliminating the need for complex keypad setup.

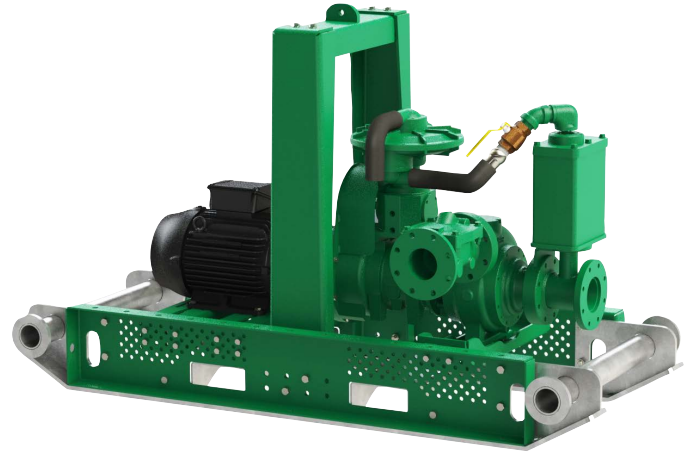
SMALL PLATFORM

GENERAL SPECIFICATIONS

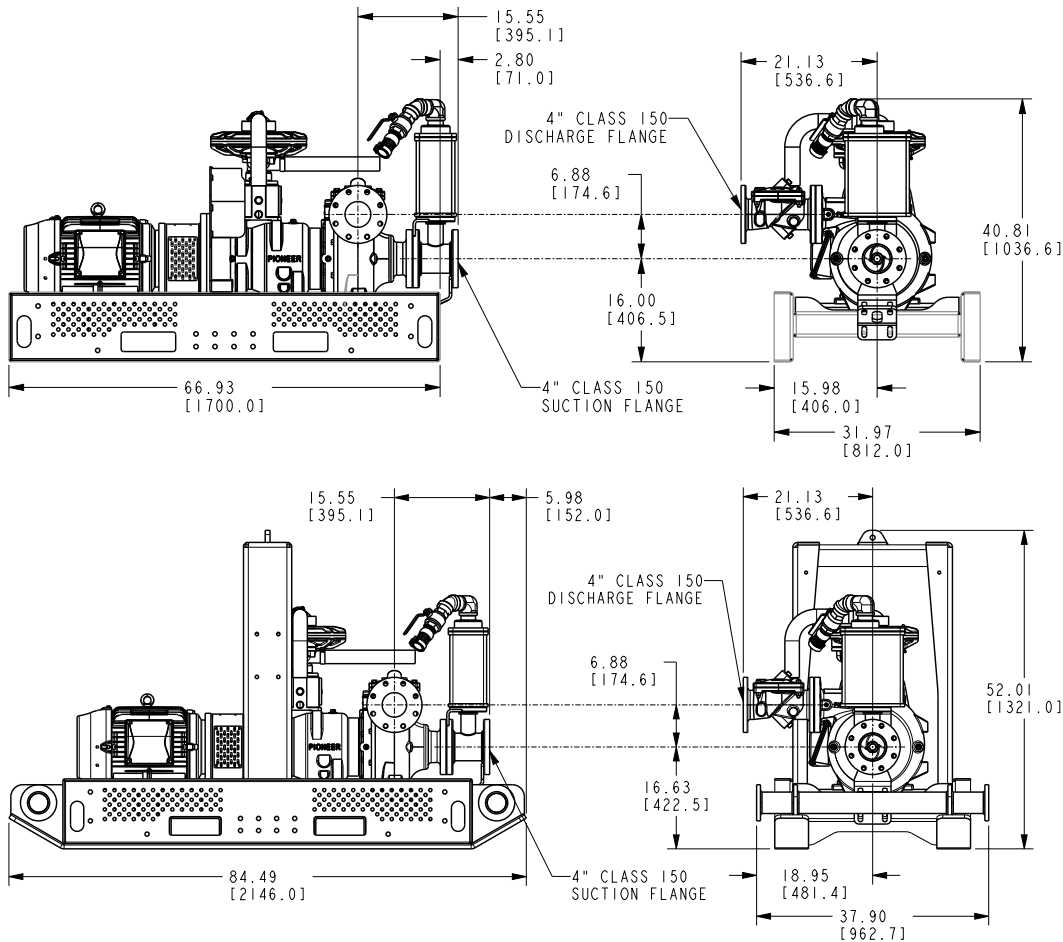
- 3-6" pump models
- Pioneer Prime & Standard Centrifugal Configurations:
 - Clear Liquids
 - Solids Handling
 - Vortex
- 7.5-30 hp motor models

APPLICATIONS

- Site dewatering
- General bypass
- Jetting



DIMENSIONS



SMALL PLATFORM

SIZING: PUMPS & IMPELLER TRIMS

Configuration	Model No.	2 Pole Motors (3600 RPM)						4 Pole Motors (1800 RPM)						6 Pole Motors (1200 RPM)			
	Motor HP	7.5	10	15	20	25	30	7.5	10	15	20	25	30	7.5	10	15	20
	Motor Frame	213T	215T	254T	256T	284T	286T	213T	215T	254T	256T	284T	286T	254T	256T	284T	286T
Solids Handling	44S8								7"	7.75"	8.25"			8.25"			
	44S8B									7"	8"	8.25"		8.25"			
	44S10									8"	8.5"	9"	9.5"	9"	10"		
	64S12												9"		9"	10"	11"
	66S10									8"	8.25"	8.5"	9"	8.75"	9.25"	10"	
	66S12														9"	10"	11"
	88S12														9"	10"	11"
	66S14																
	64S17																
	86S17																
	108S17																
	1212S17																
	86S20																
Clear Liquids	315C75	6.75"	7.5"														
	32C75	6"	6.5"	7.5"													
	425C75			6"	6.5"	7"	7.5"										
	43C75				6.5"	6.75"	7"										
	44C75					6"	6.25"	7.5"									
	54C75					6"	6.25"	7.25"	7.5"								
	32C10			8.5"	9"	9.5"											
	425C10							9.75"	10.25"								
	43C10							8.75"	9.5"	10.25"							
	64C10								8.5"	10.25"							
	86C10										8.75"	9.25"	9.5"	9.25"	9.75"	10.25"	
	53C14										11"	11.5"	12"	11.75"	13"	14"	
	64C14																
	66C14															11"	12"
	86C14																
	1010C14																
	63C17																
	64C17																14"
	86C17																
	86C17B																
	1212C17																
	108C18																
	43C21																
	64C21																
	86C21																
Vortex	44V10																
	66V10												9.65"				
	66V12																
	88V12																

NOTE: Impeller diameter shown in cross reference ensures full curve coverage at 60 Hz (1800 rpm) for a given motor and pump combination; for in depth selection, refer to FE Select
 NOTE: Model number listed in table is suitable for both Standard Centrifugal and Pioneer Prime configurations of each pump

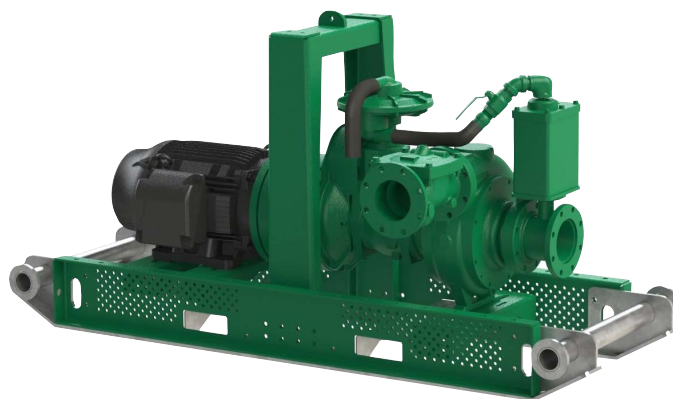
MEDIUM PLATFORM

GENERAL SPECIFICATIONS

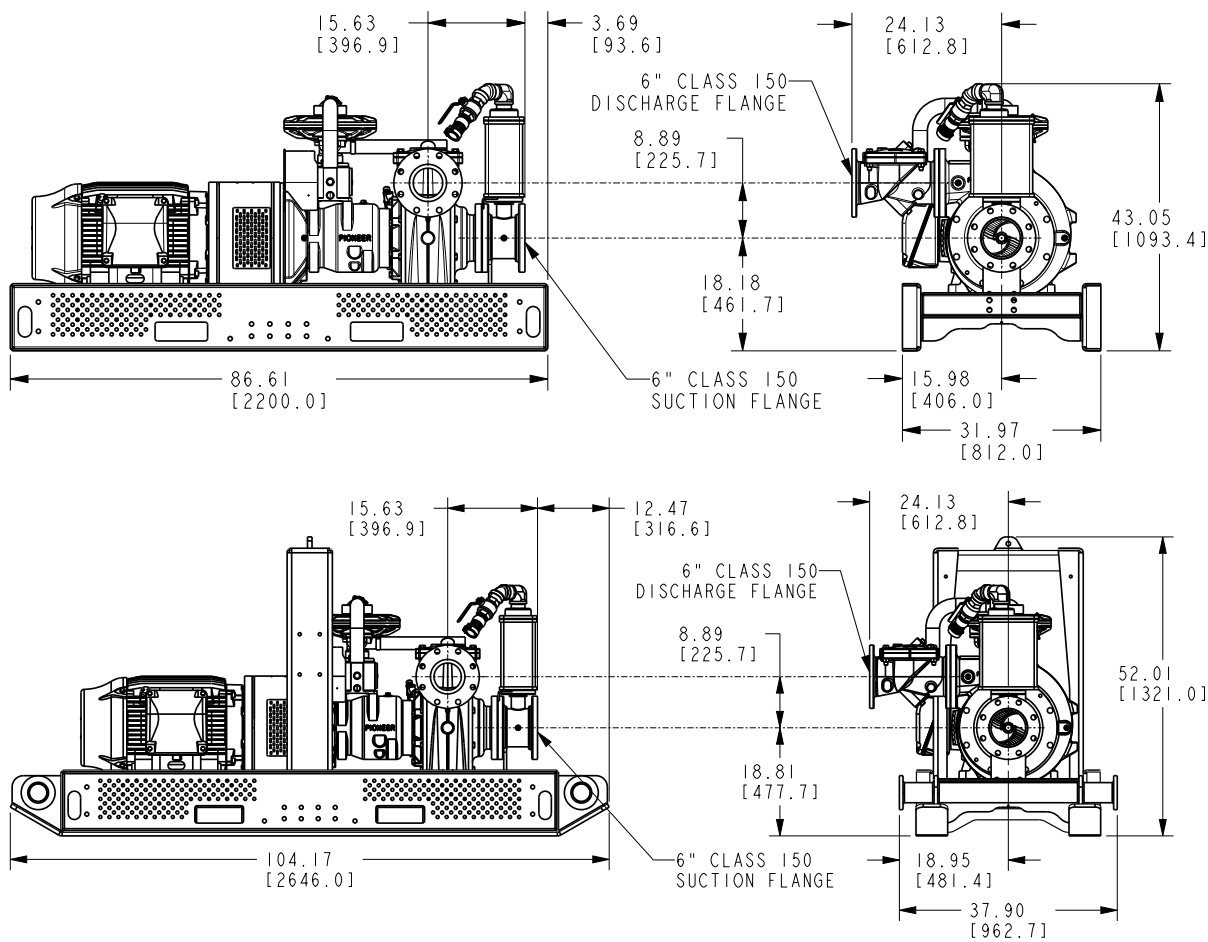
- 4-10" pump models
- Pioneer Prime & Standard Centrifugal Configurations:
 - Clear Liquids
 - Solids Handling
 - Vortex
- 40-125 hp motor models

APPLICATIONS

- Site dewatering
- General bypass
- Jetting



DIMENSIONS



MEDIUM PLATFORM

SIZING: PUMPS & IMPELLER TRIMS

Configuration	Model No.	2 Pole Motors (3600 RPM)						4 Pole Motors (1800 RPM)					6 Pole Motors (1200 RPM)					
	Motor HP	40	50	60	75	100	125	40	50	60	75	100	25	30	40	50	60	75
	Motor Frame	324T	326T	364T	365T	405T	444T	324T	326T	364T	365T	405T	324T	326T	364T	365T	404T	405T
Solids Handling	44S8																	
	44S8B																	
	44S10							10"										
	64S12							10"	10.5"	11.25"	12"		12"					
	64S17											14"		14"	15"	16"	17"	
	66S10							10"										
	66S12							9.5"	10.5"	11"	12"		12"					
	66S14										11.5"	13"	12"	13"	14"			
	86S17														14"	15"	15.75"	17"
	86S20																	
	88S12								10.25"	11"	11.75"	12.25"	12.25"					
	108S17																	
Clear Liquids	1212S17																	
	315C75																	
	32C75																	
	425C75																	
	43C75	7.5"																
	44C75	6.75"	7.25"	7.5"														
	54C75	6.5"	7"	7.5"														
	32C10	10.25"																
	425C10	8.5"	9.25"	9.75"	10.25"													
	43C10		8.75"	9"	9.5"	10.25"												
	64C10				8.5"	9.5"	10.25"											
	86C10							10.25"										
	53C14							13.5"	14"									
	64C14							11"	12"	12.5"	13.25"	14"	11.25"	14"				
	66C14								11.25"	11.5"	12.5"	13.5"	12.5"	13"	14"			
	86C14										11.25"	12"	11.25"	12"	13"	14"		
	1010C14											11"	11"	11"	12"	13"	14"	
	63C17								13.75"	14.75"	15.75"	17"	16"	17"				
	64C17										15"	16.75"	15"	16"	17"			
	86C17														14"	15"	16"	17"
	86C17B														15"	16"	17"	
	1212C17																	
	108C18															14"	15"	16"
	43C21											18.5"	17.75"	18.75"	21"			
	64C21														18"	19"	20"	21"
	86C21																	
Vortex	44V10							10.65"										
	66V10																	
	66V12										10.24"							
	88V12																	

NOTE: Impeller diameter shown in cross reference ensures full curve coverage at 60 Hz (1800 rpm) for a given motor and pump combination; for in depth selection, refer to FE Select
NOTE: Model number listed in table is suitable for both Standard Centrifugal and Pioneer Prime configurations of each pump

LARGE PLATFORM

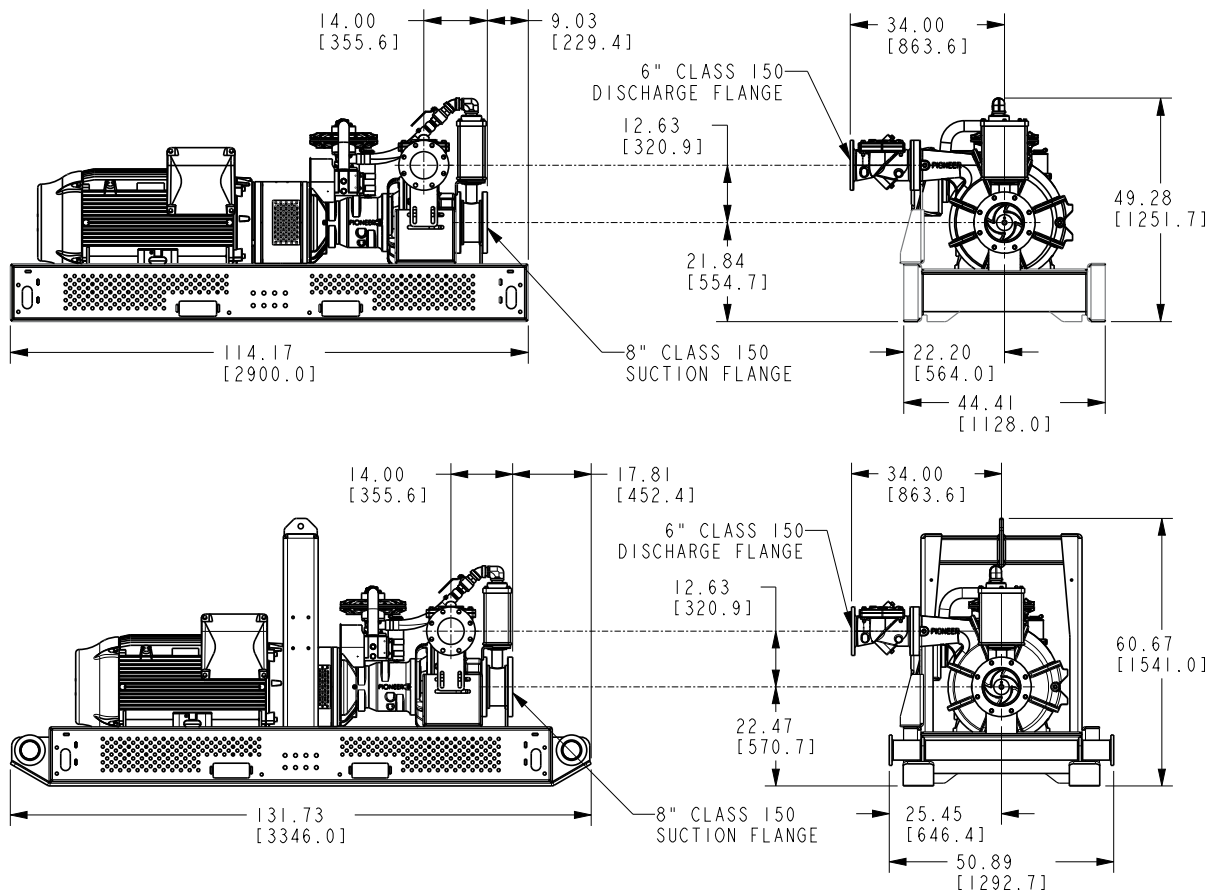
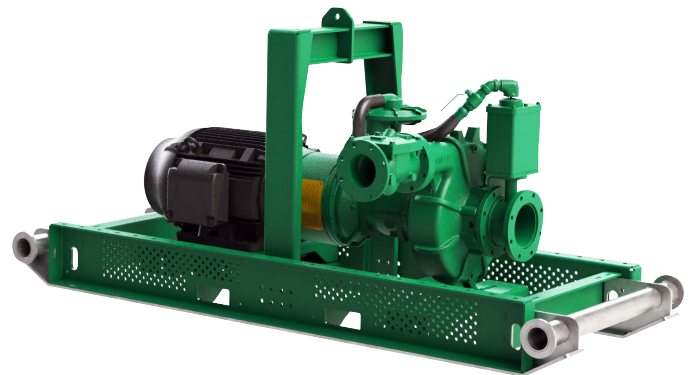
GENERAL SPECIFICATIONS

- 6-12" pump models
- Pioneer Prime & Standard Centrifugal Configurations:
 - Clear Liquids
 - Solids Handling
 - Vortex
- 125-350 hp motor models

APPLICATIONS

- High head dewatering
- Long distance water transfer
- High volume bypass

DIMENSIONS



LARGE PLATFORM

SIZING: PUMPS & IMPELLER TRIMS

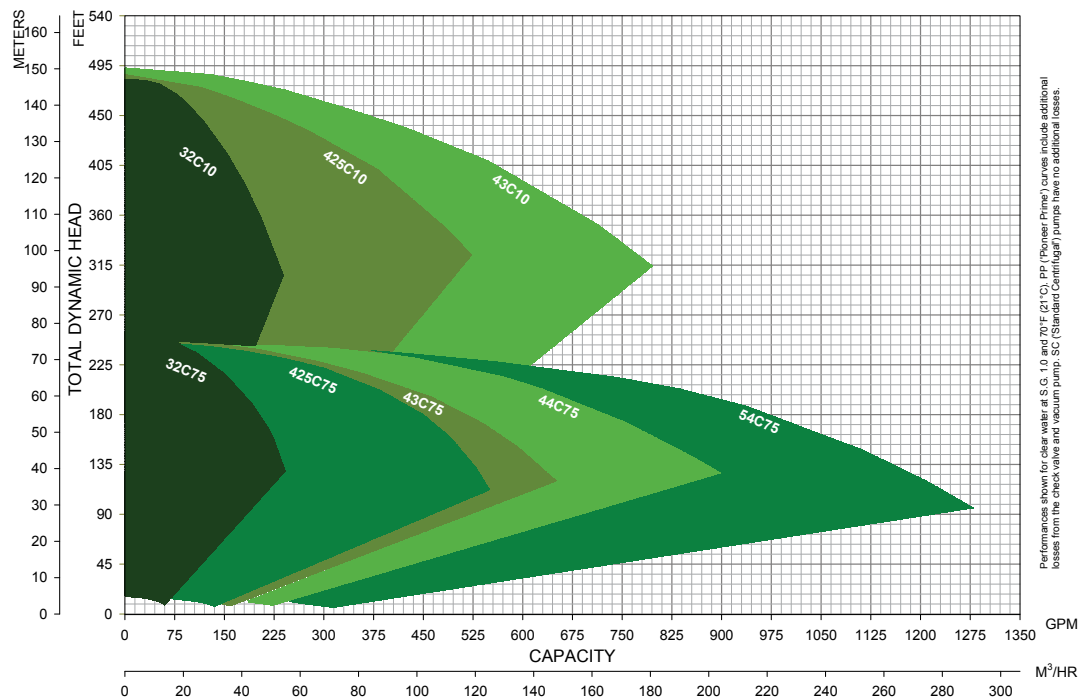
Configuration	Model No.	4 Pole Motors (1800 RPM)						6 Pole Motors (1200 RPM)			
	Motor HP	125	150	200	250	300	350	100	125	150	200
	Motor Frame	444T	445T	447T	449T	449T	449T	444T	445T	447T	449T
Solids Handling	44S8										
	44S8B										
	44S10										
	64S12										
	66S10										
	66S12										
	88S12										
	66S14	13.75"	14"								
	64S17	14.75"	15.5"	17"							
	86S17	14"	14.5"	15.75"	17"						
	108S17			14.75"	15.75"	16.5"	17.25"	17"	17.5"		
	1212S17					16"	17.25"	17.25"			
Clear Liquids	86S20				17"	17.75"	18.5"	18.25"	19.25"	20"	
	315C75										
	32C75										
	425C75										
	43C75										
	44C75										
	54C75										
	32C10										
	425C10										
	43C10										
	64C10										
	86C10										
	53C14										
	64C14										
	66C14	14"									
	86C14	12.75"	13.5"	14"							
	1010C14	12"	12.5"	13.75"	14"						
	63C17										
	64C17	17"									
	86C17		14.75"	15.75"	17"						
	86C17B	15"	15.75"	17"							
	1212C17					14.25"	14.75"		15.5"	16.5"	17.25"
	108C18			15"	16"	16.75"	17.5"	17.25"	18.25"		
	43C21	19.75"	21"								
	64C21		18.25"	20"	21"						
	86C21					18"	19"	19"	20"	21"	
Vortex	44V10										
	66V10										
	66V12										
	88V12		11.91"								

NOTE: Impeller diameter shown in cross reference ensures full curve coverage at 60 Hz (1800 rpm) for a given motor and pump combination; for in depth selection, refer to FE Select
 NOTE: Model number listed in table is suitable for both Standard Centrifugal and Pioneer Prime configurations of each pump

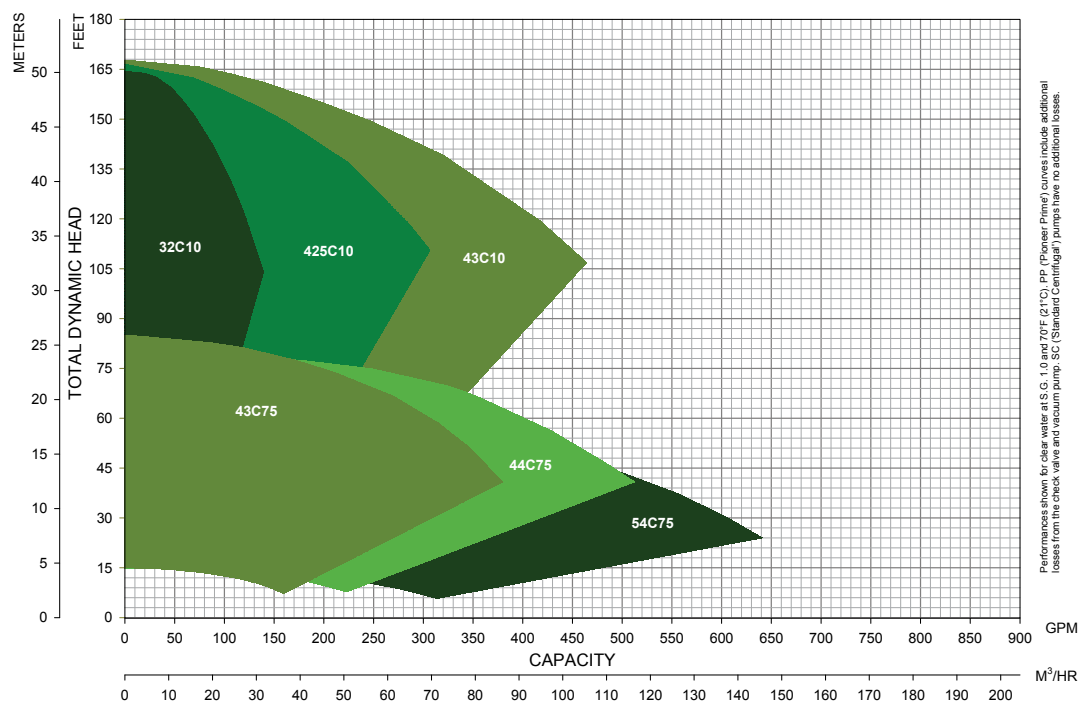
PERFORMANCE

All performance curves cover both Standard Centrifugal and Pioneer Prime pump ends.

SMALL PLATFORM: CLEAR LIQUIDS 2-POLE 60 HZ (3600 RPM)



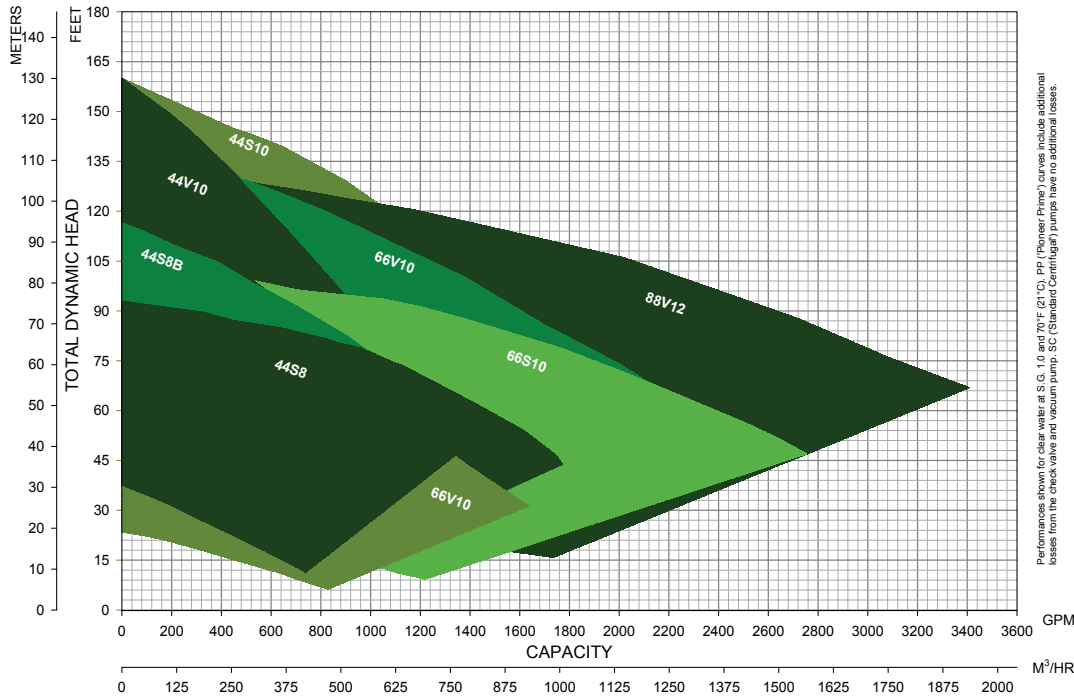
SMALL PLATFORM: CLEAR LIQUIDS 4-POLE 60 HZ (1800 RPM)



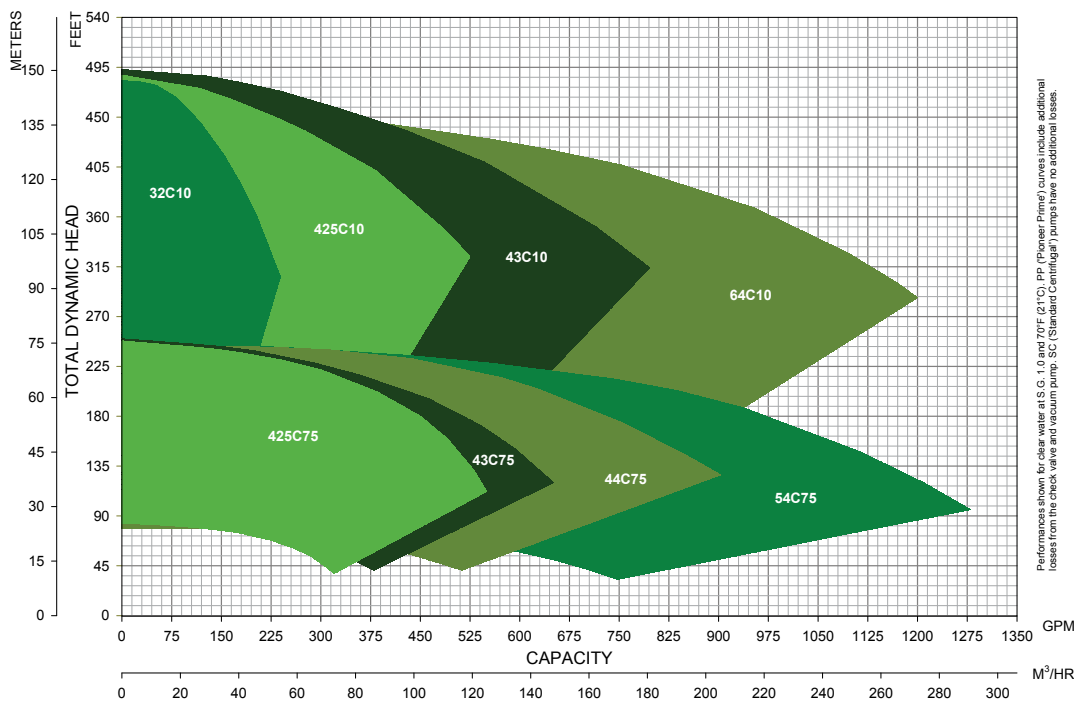
PERFORMANCE

All performance curves cover both Standard Centrifugal and Pioneer Prime pump ends.

SMALL PLATFORM: SOLIDS HANDLING 4-POLE 60 HZ (1800 RPM)



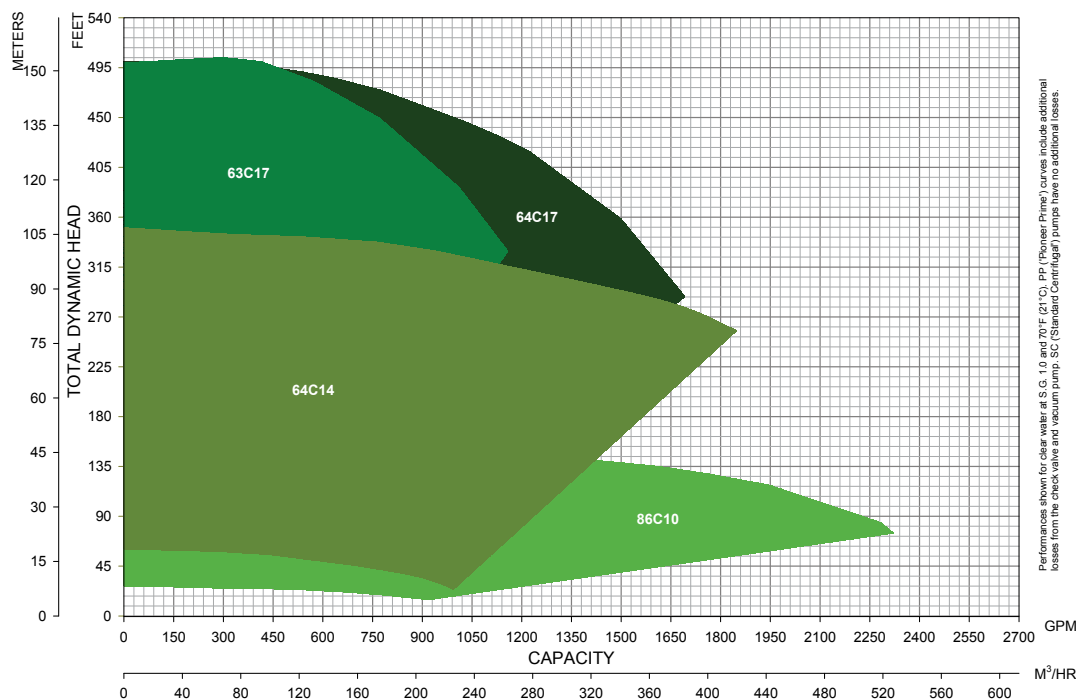
MEDIUM PLATFORM: CLEAR LIQUIDS 4-POLE 60 HZ (1800 RPM)



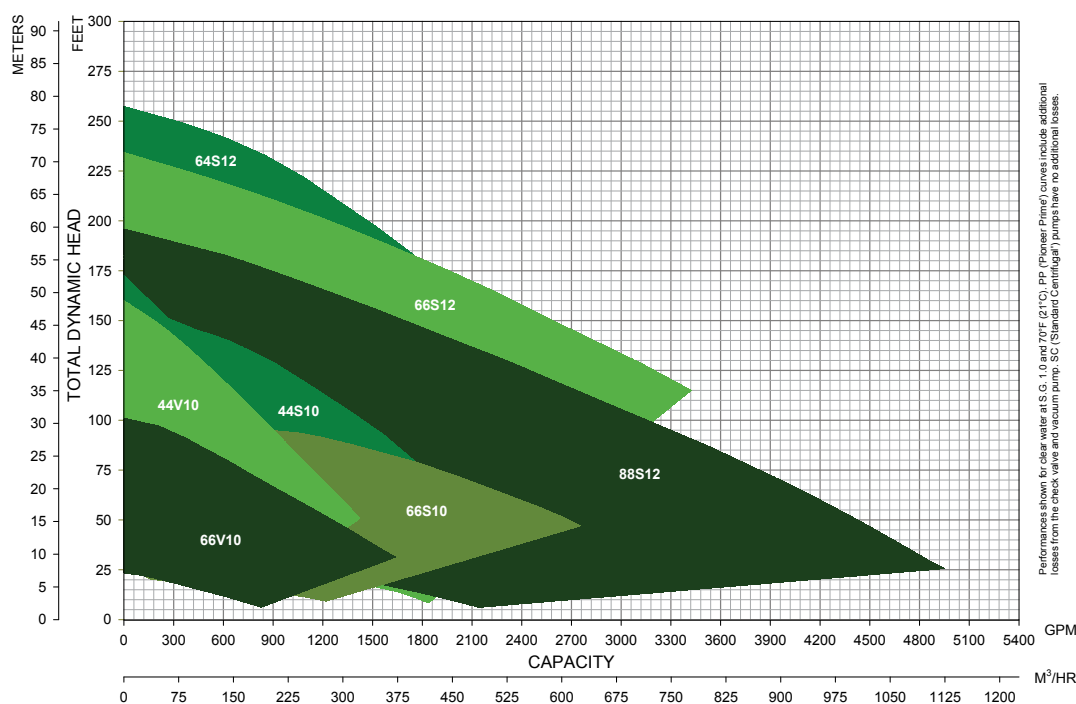
PERFORMANCE

All performance curves cover both Standard Centrifugal and Pioneer Prime pump ends.

MEDIUM PLATFORM: CLEAR LIQUIDS 4-POLE 60 HZ (1800 RPM)



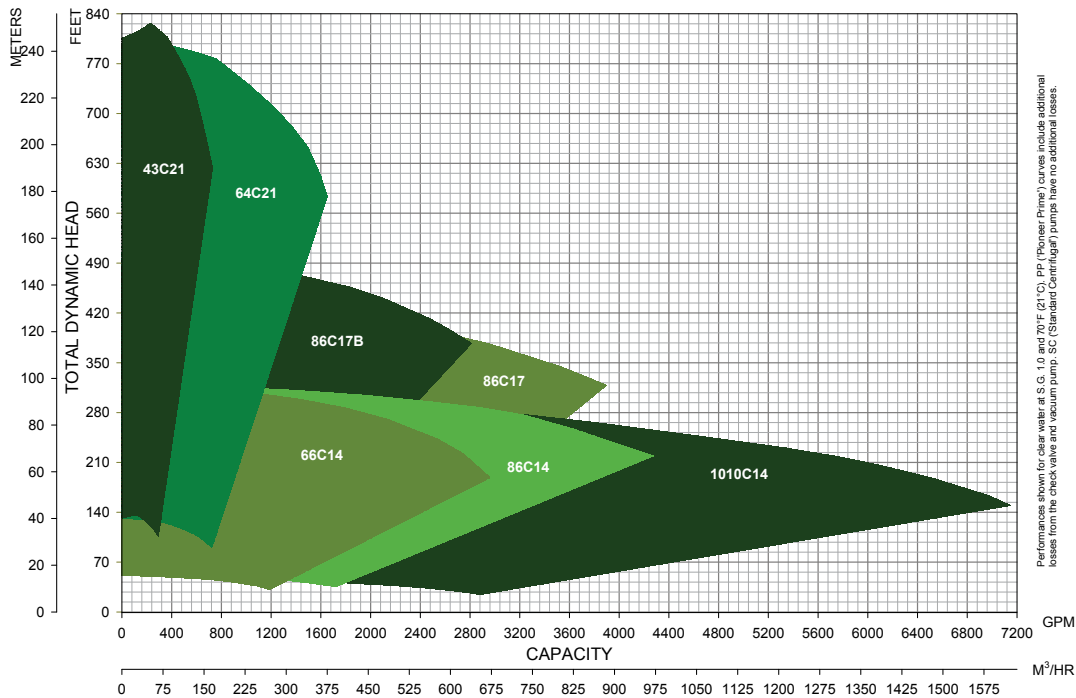
MEDIUM PLATFORM: SOLIDS HANDLING 4-POLE 60 HZ (1800 RPM)



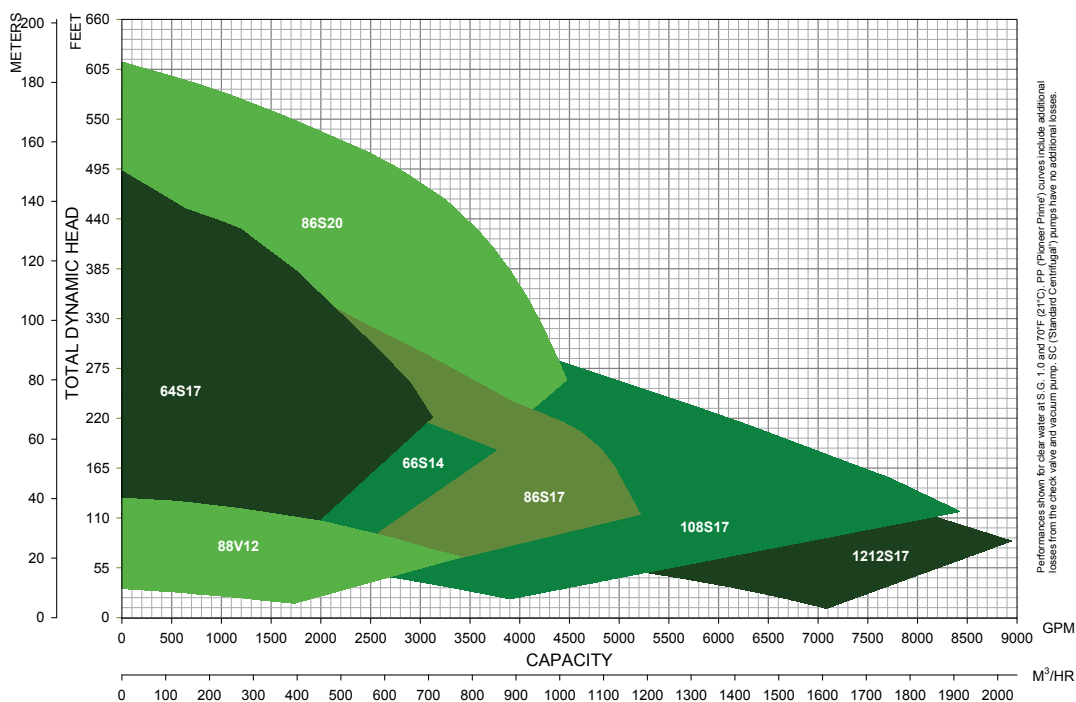
PERFORMANCE

All performance curves cover both Standard Centrifugal and Pioneer Prime pump ends.

LARGE PLATFORM: CLEAR LIQUIDS 4-POLE 60 HZ (1800 RPM)



LARGE PLATFORM: SOLIDS HANDLING 4-POLE 60 HZ (1800 RPM)



INTEGRATED ELECTRICPAK

The integrated ElectricPAK is a modular offering of electric-driven pump packages engineered from the ground up to offer a fully streamlined experience for owners and operators. Each configured assembly includes a high-performance pump, electric motor and variable frequency drive option that provides total system optimization.

SPECIFICATIONS

- Integrated drive option is available on 25-150 hp motor ElectricPAK models
- Includes camlock power input to the VFD that is directly wired to the motor for simple startup
- Features Pioneer Pump's easy-to-use SmartPrime interface
- VFD is vibration isolated to mounting points on the base and lifting bail to reduce transportation vibration and ensure panel stability

PANEL SIZING & DIMENSIONS

- 50 and 75 HP Panel Size: 48"x 36"x 16"
- 100 and 150 Panel Size: 60"x 36"x 16"
- For integrated ElectricPAK dimensional drawings, contact your Franklin Electric / Pioneer Pump representative



ELECTRICPAK VFD

The ElectricPAK VFD is a rugged, portable variable frequency drive solution designed to withstand the demands of mobile dewatering applications. It features an industry-leading touchscreen interface, known as SmartPrime. Inside the unit, the VFD uses Franklin Electric's proven electronics to deliver dependable performance and optimized motor control.

50 & 75 HP

- Panel Size: 48"x 36"x 16"
- Skid Platform: Small
- Skid Size: 52"x 85"x 34"

100 & 150 HP

- Panel Size: 60"x 36"x 16"
- Skid Platform: Small
- Skid Size: 52"x 85"x 34"

200 & 350 HP

- Panel Size: 60"x 60"x 24"
- Skid Platform: Large
- Skid Size: 80"x 88"x 49"

MODEL INFORMATION

SKU	Max. HP	Voltage	HP Range	Operational HP Range
V050-PPI-01	50	460	25-50	25-50
V075-PPI-01	75		60-75	40-75
V100-PPI-01	100		100	50-100
V150-PPI-01	150		125-150	75-150
V250-PPI-01	250		200-250	125-250
V350-PPI-01	350		300-350	200-350



50 & 75 HP



100 & 150 HP



200 & 350 HP

SMARTPRIME™ CONTROL INTERFACE

The SmartPrime control interface is exclusive to Pioneer Pump ElectricPAK systems and as intuitive to use as a mobile app. Users benefit from a fast startup and simple monitoring experience, eliminating the need for complex keypad setup, advanced programming skills or specialized training.

SPECIFICATIONS

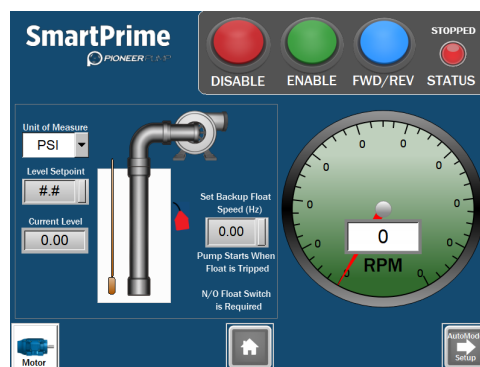
- Handle all aspects of operation from a streamlined central hub with easy-to-navigate graphics
- Two SmartPrime mode options help operators get packages up and running with just a few touches:
 - Manual mode lets users adjust basic pump parameters using simple on-screen tools and includes analog sensor monitoring for up to four control and data variables
 - Auto mode lets users fine tune parameters based on their specific surface dewatering telemetry: level transducers, float switches, pressure transducer or flow meter; this mode features clear graphic displays of real-time pump conditions
- Alternative Hand mode allows users to operate the panel with tactile push buttons and door mounted speed potentiometer; Hand mode tracks and logs alarms onto an SD card for future reference
- Float operation allows the user to control their pump on a single or dual float system, and to back up transducer operation to ensure system redundancy in critical applications
- Transducer modes allow the user to connect a transducer and control a system off level and pressure, enabling simple and precise application setup with a few simple taps
- The SmartPrime interface continuously monitors and stores data on an SD card to ensure that data backup is available to review in case of application issues



The SmartPrime home screen is designed to be intuitive and powerful, with the tools you need to operate your pumping system right at your fingertips.



Manual mode enables pump operators to start up quickly and precisely control speed with familiar touch screen controls.



Auto mode makes it easy to configure a float or transducer-based application, offering simplified menu options and easily configurable operation modes.

FE SELECT

With 24/7 online and mobile-friendly availability, FE Select instantly helps you formalize your deliverables with printable and downloadable quotes: no waiting for a callback.

Getting what you need has never been easier.

FE Select is the industry-leading online tool from Franklin Electric that makes configuring a Pioneer ElectricPAK easy for contractors, engineers, fleet managers and wholesale distributors. In minutes you can download full technical specifications and generate pricing to order what you need. It's secure and free-to-use: input your performance requirements or specs, and FE Select will help you find the best Pioneer ElectricPAK to fit your needs.



SCAN & START SELECTING



FE Select USA

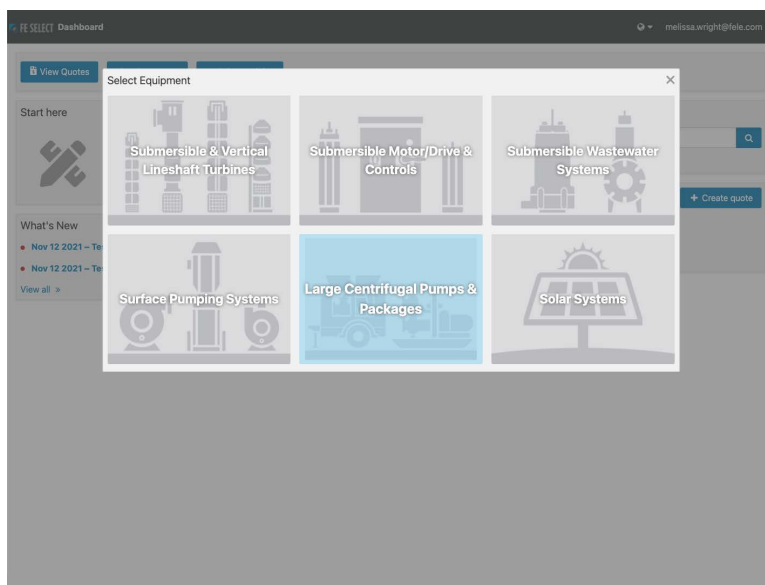
FE Select Canada

SIZE

Size & Select the Right Pump for the Job

Users input parameters and the tool does the rest: fully specifying what products are recommended, including the necessary components.

- Enter primary application data, such as flow and total dynamic head demands, and the tool will recommend product selections for the job
- Narrow down the recommended products list based on the parameters such as suction/discharge size, power requirements and NPSHr
- Obtain quick access to related informational product documentation and performance curves



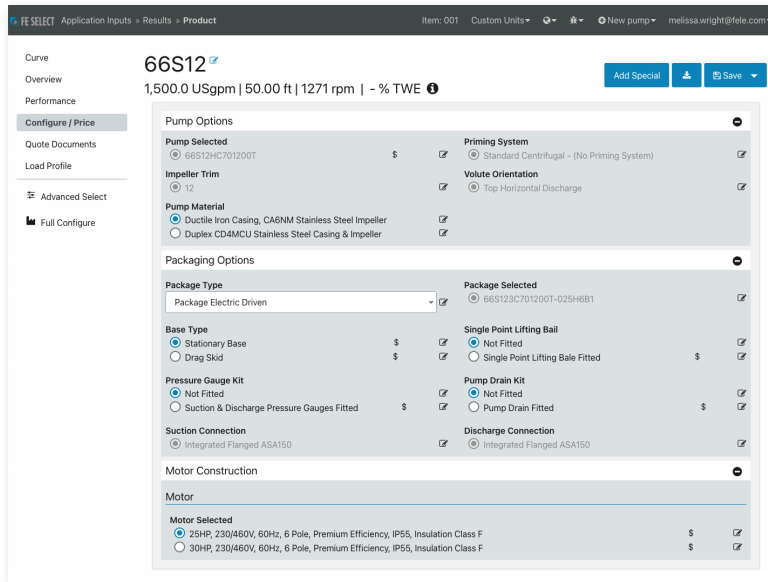
FE SELECT

CONFIGURE

Simplify Configuration & Pricing Tasks

FE Select offers a configurator tool that provides users with clear visibility of product selection, price breakdown, available options and overall product performance on the performance curve.

- Customize your ElectricPAK to meet application requirements after selecting the ideal pump and impeller size that fits your performance needs
- Select a VFD sized for your application and choose your mounting configuration
- Build out a unique quote with live line-item pricing updates to rapidly setup quotations
- Enhance your proposal documents with package drawings and specifications

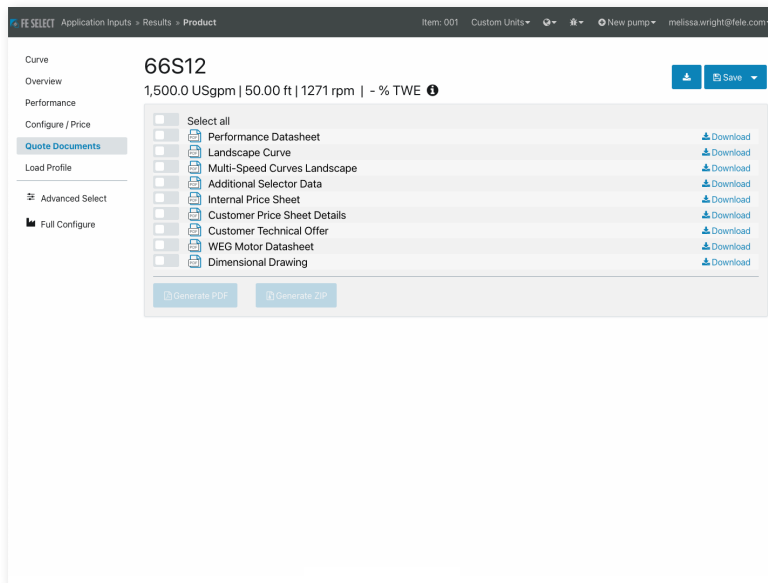


QUOTE

Streamline Sales Efforts with Quotation Management

After selecting and pricing an electric package, users can save their quote to either view later, or move their selection into the ordering process.

- Start your experience managing new or existing work on your dashboard
- Create and save quotations or projects using your FE account*
- Keep track of your opportunities all in one place



ENGINEERED PACKAGES

Engineered packages are available when application requirements exceed the size limits of the ElectricPAK offering for small, medium and large platforms. These packages are designed for projects that require larger pump or motor sizes and additional packaging options. Engineered packages have limited availability and are not available in FE Select for size, configure or quote. Please contact your Franklin Electric sales representative for more information.

MOTOR OPTIONS

- 575 voltage
- 400+ hp motor models
- Flameproof/explosion proof

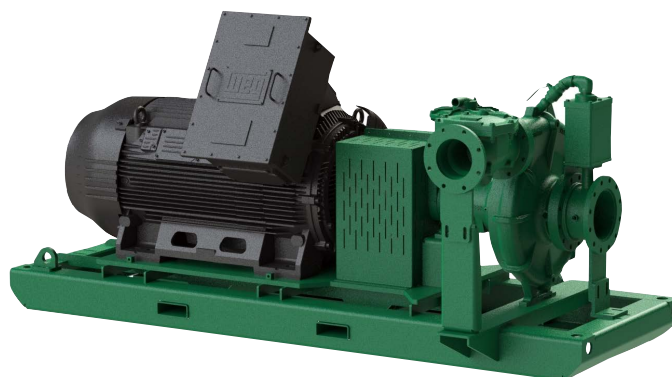
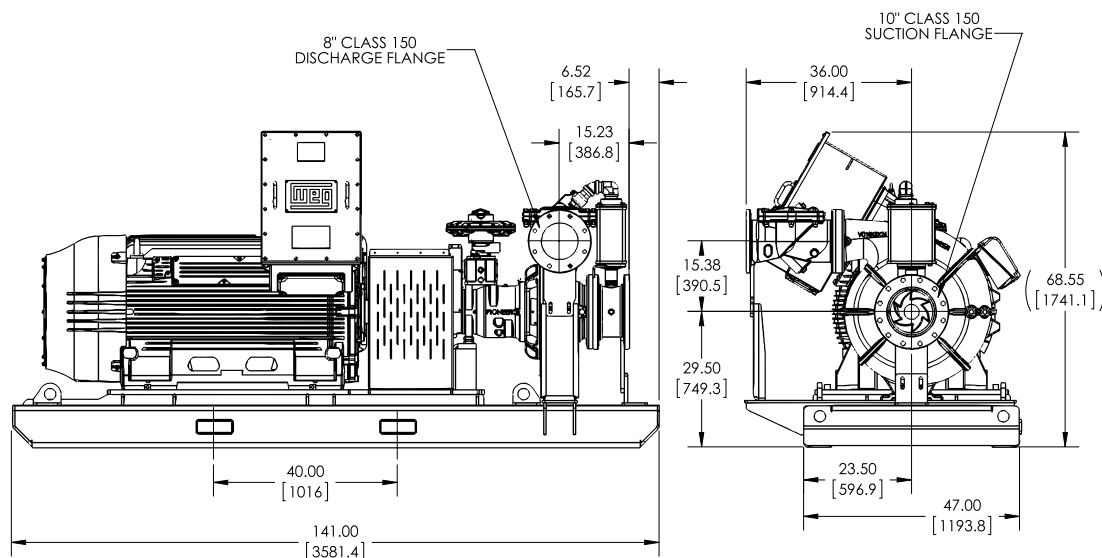
AVAILABLE PUMP ENDS

- 86C21
- 86S20
- 108C18
- 108C24

PACKAGE CONFIGURATIONS

- Stationary base
- Drag skid
- Trailers
- Integrated lifting bail

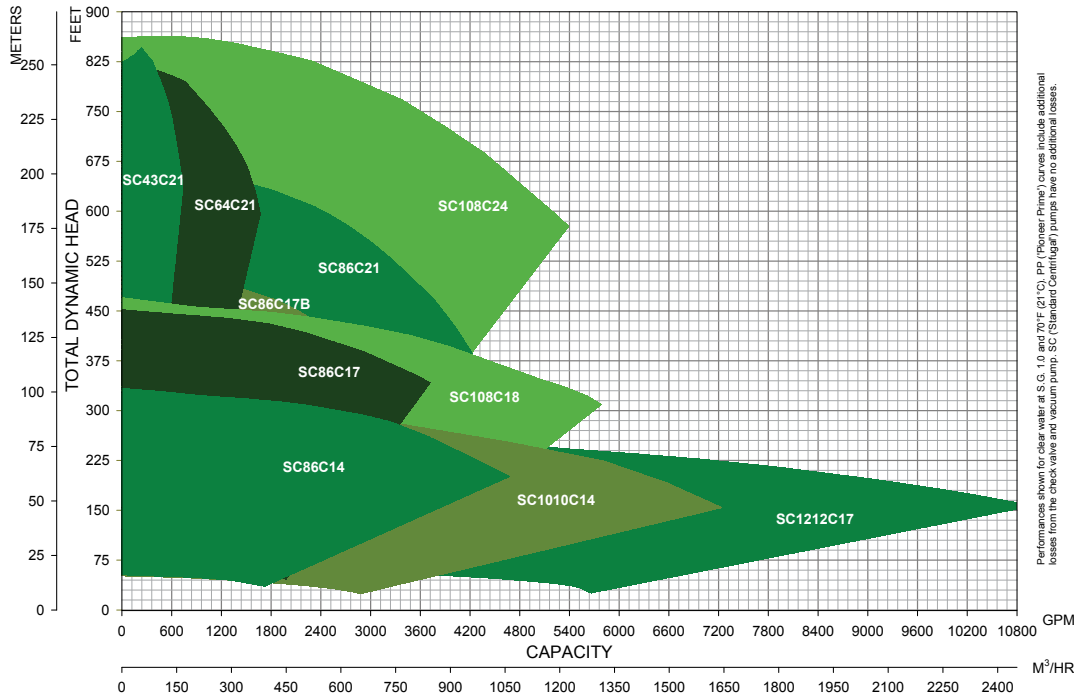
DIMENSIONS



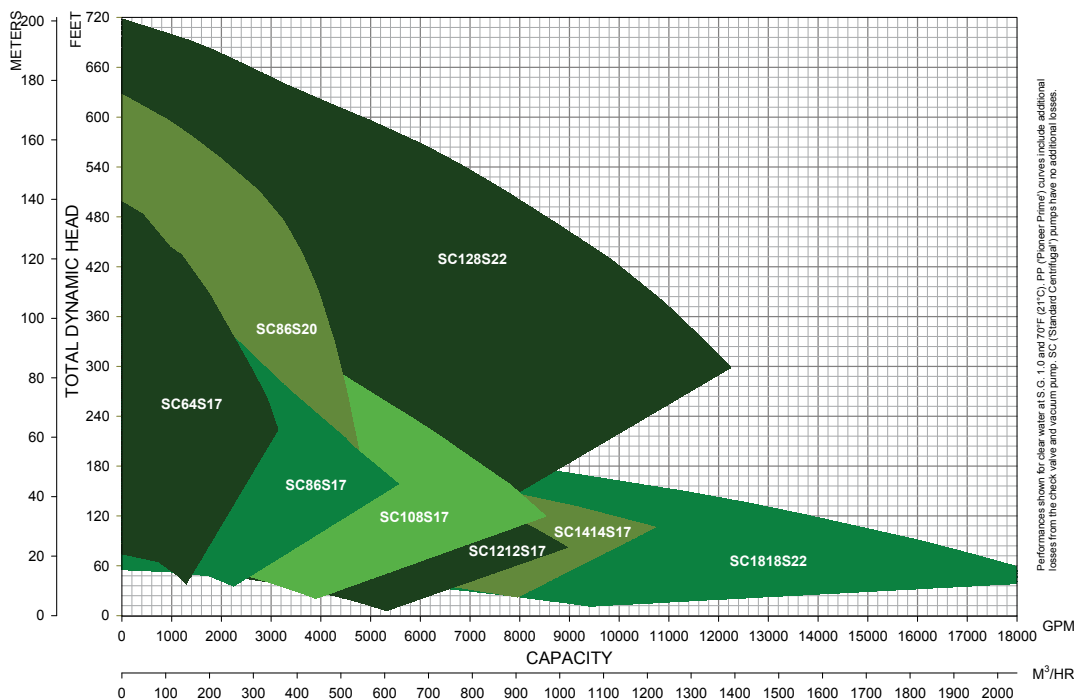
ENGINEERED PACKAGES

All performance curves represent pump performance for both Standard Centrifugal and Pioneer Prime configurations of each pump ends.

ENGINEERED PACKAGES: CLEAR LIQUIDS 4-POLE 60 HZ (1800 RPM)



ENGINEERED PACKAGES: SOLIDS HANDLING 4-POLE 60 HZ (1800 RPM)



NOTES

